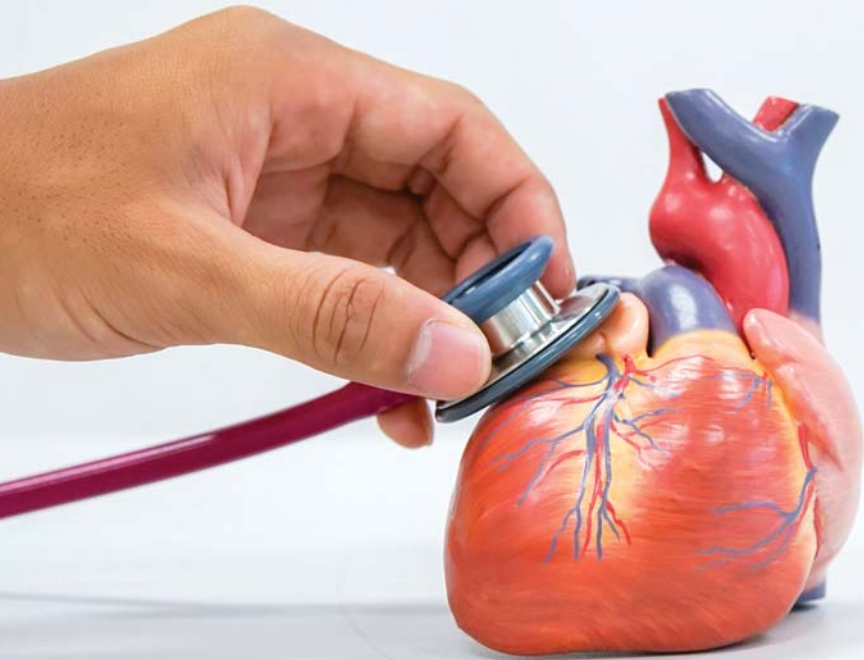


# Nova 2024

GOLD COAST

4th and 5th May 2024  
Gold Coast University Hospital



Gold Coast Health  
always care



Queensland  
Government

*Proudly brought to you by*



# PLEASE JOIN US

## LUNCH SYMPOSIUM

**Saturday, 4 May 2024**  
**2:00 p.m. - 2:30 p.m.**  
**GORE Lecture Theatre**



## **U.S. Experience in Patent Foramen Ovale Closure with the GORE® CARDIOFORM Septal Occluder**



### **Speaker**

**Dr. Joseph Aragon, MD, FACC, FSCAI**

Interventional Cardiologist and Structural Heart Disease Specialist  
California, U.S.A.



### **Agenda**

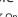
- Clinical Experience in Patent Foramen Ovale Closure
- Referral Pathways
- Case Studies



### **Registration**

Free for registered delegates (no ticket required)

 Consult Instructions  
for Use  
[eifu.goremedical.com](http://eifu.goremedical.com)

Refer to *Instructions for Use* at [eifu.goremedical.com](http://eifu.goremedical.com) for a complete description of all applicable indications, warnings, precautions and contraindications for the markets where this product is available.  only

Products listed may not be available in all markets.

GORE, CARDIOFORM and designs are trademarks of W. L. Gore & Associates.

© 2024 W. L. Gore & Associates (Australia) Pty. Ltd. 24CR4006-EN01 APRIL 2024





**DAY 1**

*Saturday 4th May*

**0700-0830**

## **Breakfast Snacks**

**0830-0845**

## **Welcome by MC** *GORE Lecture Theatre #1*

Nick Seton

## **Conference Open**

Associate Prof Atifur Rahman

## **Introduction**

Prof Rohan Jayasinghe

**0845-0930**

## **Plenary Presentation** *GORE Lecture Theatre #1*

Dr Chet Rihal

*Mayo Clinic, Minnesota*

Structural Intervention beyond the Values

**0930-1100**

## **Left Atrial Appendage Occlusion** *GORE Lecture Theatre #1*

*Chair Prof Rohan Jayasinghe*

0930-0945

Dr Sylvio Provenzano

*GCUH*

Surgical Anatomy of the LAA

0945-1000

Dr Katherine Lau

*The Prince Charles Hospital*

Cardiac Imaging of the LAA

1000-1030 Dr Stephen Worthley  
*Macquarie University*  
Left Atrial Appendage Occlusion

1030-1100 Panel Discussion  
Dr Ben Hunt /Dr Stephen Worthley/Dr Sylvio Provenzano (cardiac surgeon)  
Dr Peter Bailey (Neurologist)

**1100-1130** **Morning Tea** *Trade Booth Foyer*

**1130-1330** **Atrial Septal Interventions** *GORE Lecture Theatre #1*  
*Chair Dr Astin Lee (The Wollongong Hospital)*

1130-1145 Dr Sylvio Provenzano  
*GCUH*  
Surgical Anatomy of the Atrial Septum

1145-1200 Dr Jorge Morageus  
*The Wollongong Hospital*  
Cardiac Imaging of the Atrial Septum

1200-1230 Dr Jo Aragon MD  
*University of Southern California*  
PFO Occlusion - State of the Art

1230-1300 Dr Peter Fahmy  
*Westmead Hospital*  
ASD occlusion - State of the Art

1300-1330 Panel Discussion  
Dr Astin Lee (Facilitator) Dr Peter Bailey/ Dr Nick Collins  
Dr Dale Murdoch

**1330-1430** **Lunch** *Trade Booth Foyer*

PROUD OF OUR PAST  
 EXCITED ABOUT OUR FUTURE

25 YEARS AMPLATZER™  
 STRUCTURAL  
 INTERVENTIONS

The Amplatzer™ line not only pioneered structural heart defect occluder devices, it remains the leader in innovation and treatment worldwide.

**Stroke Risk Reduction**



Amplatzer™ Amulet™  
 Left Atrial Appendage  
 Occluder



Amplatzer™ Talisman™  
 PFO Occluder

**Paravalvular Leaks Closure**



Amplatzer™ Valvular  
 Plug III

**Congenital Heart Defects**



Amplatzer™ Septal  
 Occluder



Amplatzer™ Cribriform  
 Occluder



Amplatzer™ P.I. Muscular  
 VSD Occluder



Amplatzer™ Muscular  
 VSD Occluder



Amplatzer™ Duct  
 Occluder



Amplatzer™ Duct  
 Occluder II



Amplatzer™ Piccolo™  
 Occluder

CAUTION: This product is intended for use by or under the direction of a physician. Prior to use, reference the Instructions for Use, inside the product carton (when available) or at [efu.abbottvascular.com](http://efu.abbottvascular.com) or at [medical.abbott/manuals](http://medical.abbott/manuals) for more detailed information on Indications, Contraindications, Warnings, Precautions and Adverse Events.

Information contained herein for **DISTRIBUTION in Australia and New Zealand ONLY.**

Illustrations are artist's representations only and should not be considered as engineering drawings or photographs. Photo(s) on file at Abbott.

**Abbott Medical Australia Pty Limited:**  
 299 Lane Cove Road, Macquarie Park, NSW 2113 Phone: 1800 550 939

**Abbott Medical New Zealand Limited:**  
 Ground Floor, Bldging D, 4 Pacific Rise, Mount Wellington, Auckland 1060 Phone: 0800 827 285



# Support for failing hearts



VenstraMedical a novel pVAD company

## Next Generation Percutaneous Heart Pump Technology

Our goal is to develop and commercialise percutaneous circulatory support systems for temporary use by cardiologists in the treatment of patients requiring cardiac support without surgical intervention.

[Learn more](#)



1400-1430

**GORE Lunch Symposium** *GORE Lecture Theatre #2*

Dr Joe Aragon

*Interventional Cardiologist and Structural Heart Disease Specialist at Santa Barbara Cottage Hospital and Sansum Clinic, California.*

US Experience in Patent Foramen Ovale Closure with the GORE® CARDIOFORM Septal Occluder.

- Clinical Experience in Patent Foramen Ovale Closure
- Referral Pathways
- Case Studies

1430-1700

**MCS Symposium** *GORE Lecture Theatre #1*

*Chair - Dr Suku Thambar (John Hunter Hospital)*

1430- 1450

Dr Chet Rihal

*Mayo Clinic*

MCS State of the Art

1450 - 1510

Dr Pankaj Jain

*Concord Hospital*

MCS the Evidence

1510 - 1540

Dr Atta Behfar

*Mayo Clinic*

IABP and Ecmo

1540 - 1600

Dr James Xu

*Liverpool Hospital*

The Impella series

1600 - 1620  
Dr Suku Thambar  
*John Hunter Hospital*  
Novel Transvalvular pVAD

1620 - 1640  
Prof Chris Hayward  
*St Vincent's Hospital - Sydney*  
Distal aortic pVADs for Heart failure

1640- 1730  
**Panel Discussion**  
Dr Suku Thambar (Facilitator) Dr James Xu / Dr Attar Behfar / Dr Chet Rihal / / Dr Kiran Shekar

**1600 - 1645** **Philips International Presenter** *GORE Lecture Theatre #2*

Agnes Van Manen

*Global Senior Product Manager Structural Heart Disease and Congenital Heart Disease, IGT-S Business, Philips*

Advanced fusion that advances with you

**1730-1745** **Day One Closing Remarks** *GORE Lecture Theatre #1*

Prof Rohan Jayasinghe

**From 1830**

**Official 2024 Nova Conference Cocktail Party**

Southport Sharks Events Centre (adjacent to GCUH Precinct)

Cocktail Party Sponsored by Gold Coast Health and Knowledge Precinct. Welcome by Craig Rowsell, Director, Gold Coast Health & Knowledge Precinct

HEALTH AND KNOWLEDGE PRECINCT  
**GOLD COAST**



A spotlight on the highly sophisticated simulation catheterisation laboratory and robotics facility Neu Tex will also be made by Dr Hal Rice.



## Industry Workshops Day 1



**From 10am**

Please visit the GORE break-out room to experience the GORE® CARDIOFORM Septal Occluder and GORE® CARDIOFORM ASD Occluder in a hands-on and simulator-based workshop setting



**From 10am**

Workshop program to be confirmed

This workshop offers -

- Mentice VR trainer with PFO, ASD and LAAO case sim
- Mentice VR trainer with ICE case simulation
- Hands on with structural intervention devices
- Vessel Closure hands on with innovative wet model
- 3mensio workstation for LAA Occlusion planning
- HeartMate 3 LVAD demonstration



GE HealthCare

**From 10am**

This workshop will cover:

Vivid E95 Premium Ultrasound

6VT-D Transoesophageal Probe and Heart Phantom for live scanning simulation

ViewPoint with EchoPAC reporting - Image analysis and manipulation - tips and tricks



**From 10am**

Impella Workshop - Introduction to Heart Recovery Program. This session is intended for all who are interested to start Impella program or to know more about Impella. The topics which will cover in this one-hour program are as follows :

- Patient Identification & Case-Based Discussion
- Impella in cardiogenic shock: What is new?
- Hands-On Insertion : Tips& tricks

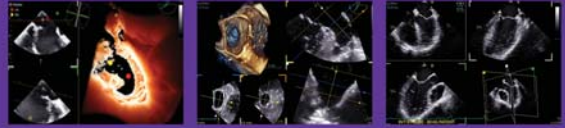
Vivid™ Ultra Edition

# Clinical Excellence for Interventional Procedures

## Vivid™ 9VT-D

Smaller probe. Better access.

The first and most compact 3D mini TEE probe available on the market - Potentially eliminating the need for general anesthesia in adult patients.



*"An important challenge is the need for anesthesia. It may increase the risk and the complexity of the intervention, so we are going towards less invasive procedures with the same safety. Without general anesthesia and without the need of a conventional probe, it makes everything go faster and quicker".*

*- Dr. Marta Sitges, MD, Ph.D.  
who is the director of the Cardiovascular Institute, Hospital Clinic de Barcelona*



The next generation of cardiovascular ultrasound is here: Introducing, Vivid Ultra Edition for interventional procedures.

The 9VT-D probe is only available on the Vivid™ E95

The information on this flyer is aimed exclusively at Licenced Healthcare Practitioner.

© 2023 GE HealthCare. GE is a trademark of General Electric Company used under trademark license.

Scan  
to learn  
more

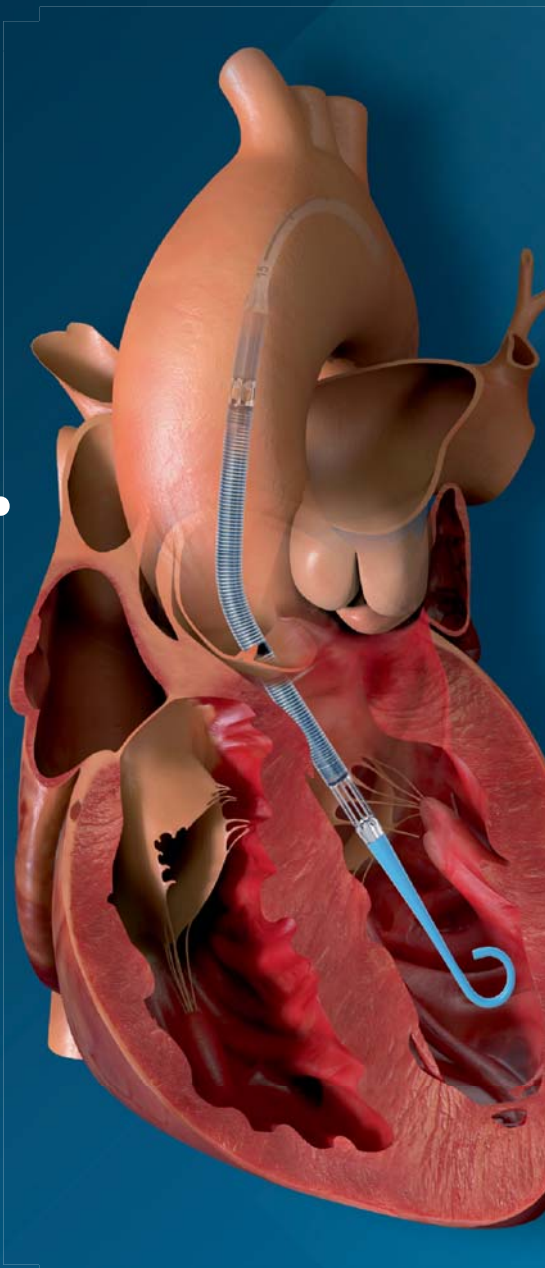
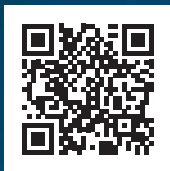


# Impella®

Unload.  
Rest.  
**RECOVER.**

Impella® heart pumps are the only FDA approved percutaneous devices for high-risk PCI and cardiogenic shock.

Scan here to learn more about Impella heart pumps



J&J MedTech

 **ABIOMED®**

IMP-4501



**PHILIPS**

Cardiology

# EchoNavigator on EPIQ CVxi

**Unparalleled visualisation of anatomy  
and devices. Together.**

EchoNavigator reorients and combines ultrasound and X-ray information into a single augmented visualisation for guidance and device-tissue relationship assessment.



## DAY 2

Sunday 5th May

**0700-0830**

**Breakfast Snacks** *Trade Booth Foyer*

GORE Lecture Theatre #1

0830-0900

Dr Chet Rihal – Mayo Clinic  
Dr Virag Kushwaha – Prince of Wales Hospital

Paravalvular Leak Closure (discussion)

0900-0930

Dr Mudassir Rashid  
*GCUH*

Aneurysm and AV fistula closure techniques

**0940-1140**

**Concurrent Symposium** *GORE Lecture Theatre #2*

**Fellows Event**

*Chair – Dr Stephen Worthley / Facilitator – Dr Maggie He*

0940-1000

Dr Stephen Worthley  
*Macquarie University Hospital*  
Local vs Overseas Fellowship

1000-1020

Prof Kuljit Singh  
*GCUH*  
Research/PhD vs Clinical Fellowship

1020-1040

Dr Tony Vo  
*GCUH*  
What is the future? Public and/or Private

1040-1140

**Panel Discussion**

Dr Tony Vo / Dr Stephen Worthley / Prof Kuljit Singh

- 1040-1140      **Fellows Symposium Close**  
 Prof Rohan Jayasinghe
- 0930-1445**      **Concurrent Symposium** *GORE Lecture Theatre #1*  
**Nursing**  
*Mark Weaver RN - Coordinator*
- 0930-1015      **Dr Laila Khan, Staff Specialist Imaging Cardiologist, The Canberra Hospital**  
 How to detect Coronary Artery Fistula and when to intervene
- 1015-1100      **Jeanine Stewart- Nurse Practitioner, ACS, The Prince Charles Hospital**  
 Nurse Practitioners within Interventional Cardiology
- 1100-1145      **Andrie Stroebel, Medical Director, Cardiothoracic Surgery, Gold Coast University Hospital**  
 Surgical Left Atrial Appendage Clips
- 1200-1230**      **LUNCH** *Trade Booth Foyer*
- 1230-1315      **Deborah Bick- Nurse Unit Manager, Cardiac Investigations Unit, The Prince Charles Hospital**  
 Cardiac Arrest in the Lab
- 1315-1400      **Kimberley Bardsley- Nurse Practitioner, Cardiology, The Prince Charles Hospital**  
 Patient safety, >5Gy Radiation follow up for post cardiac procedures, an MDT approach (via TEAMS)
- 1400-1445      **Dr Scott McKenzie - Cardiologist, The Prince Charles hospital**  
 CardioMEMs Heart Failure System - via TEAMS

From 1000

## Industry Workshops Day 2



**From 10am**

Please visit the GORE break-out room to experience the GORE® CARDIOFORM Septal Occluder and GORE® CARDIOFORM ASD Occluder in a hands-on and simulator-based workshop setting



**From 10am**

Workshop program to be confirmed

This workshop offers -

- Mentice VR trainer with PFO, ASD and LAAO case sim
- Mentice VR trainer with ICE case simulation
- Hands on with structural intervention devices
- Vessel Closure hands on with innovative wet model
- 3mensio workstation for LAA Occlusion planning
- HeartMate 3 LVAD demonstration



GE HealthCare

**From 10am**

This workshop will cover:

Vivid E95 Premium Ultrasound

6VT-D Transoesophageal Probe and Heart Phantom for live scanning simulation

ViewPoint with EchoPAC reporting - Image analysis and manipulation - tips and tricks

**3pm**

**Nova 2024 Concludes**

*GORE Lecture Theatre #1*

We invite all delegates to attend closing remarks.



Life Systems  
MEDICAL PTY LTD

Every beat counts.

Occlutech



## Discover the benefits of our PFO, ASD and PDA range

Life Systems Medical is proud to announce its exclusive distribution of the Occlutech range. Our clinical team is ready to support you in all your procedures, from the routine to complex.



For more information please contact our National Sales and Product Manager

Nick Didenkowski

[nick@lifesystems.com.au](mailto:nick@lifesystems.com.au)

M: 0439 458 094

[www.lifesystems.com.au](http://www.lifesystems.com.au)





# When we challenge, we advance.

Boston Scientific is committed to advancing the cardiology specialty through next generation clinical and product development, medical education, and physical collaboration.



Scan the QR code to contact your local Boston Scientific representative to learn more about our innovative product solutions.



# THE ONLY PCSK9 INHIBITOR WITH UP TO 8.4 YEARS OF SAFETY AND EFFICACY DATA IN CLINICAL TRIALS<sup>1-5</sup>



- Sustained LDL-C reduction for up to 8 years.<sup>\*2,3</sup>

<sup>\*</sup>Maximum exposure to Repatha in parent plus FOURIER-OLE was 8.4 years.<sup>3</sup>

- In the long-term extension study (FOURIER-OLE), rates of adverse events remained persistently low for up to 8.4 years.<sup>3</sup>
- Repatha has an overall safety profile comparable to control groups.<sup>1</sup>



## CHOOSE REPATHA

Check your patient's eligibility for Repatha using the simple PBS Navigator at [www.repatha.com.au](http://www.repatha.com.au)

**PBS Information:** Authority Required. Non-familial and familial hypercholesterolaemia. Criteria apply for certain patient populations. Refer to PBS Schedule for full Authority Required Information.

Refer to full Product Information before prescribing; available from Amgen Australia Pty Ltd, Ph: 1800 803 638 or at [www.amgen.com.au/Repatha.PI](http://www.amgen.com.au/Repatha.PI)

For more information on Repatha<sup>®</sup> or to report an adverse event or product complaint involving Repatha<sup>®</sup>, please contact Amgen Medical Information on 1800 803 638 or visit [www.amgenmedinfo.com.au](http://www.amgenmedinfo.com.au)

**Abbreviations:** LDL-C, low-density lipoprotein cholesterol; PCSK9, proprotein convertase subtilisin/kexin type 9.

- References:** **1.** Repatha PI. Repatha (evolocumab) Approved Product Information. [www.amgen.com.au/Repatha.PI](http://www.amgen.com.au/Repatha.PI). **2.** Sabatine MS, *et al.* *N Engl J Med* 2017;376(18):1713-22. **3.** O'Donoghue ML, *et al.* *Circulation* 2022;146:1109-19. **4.** Leqvio (inclisiran) Product Information, May 2022. **5.** Praluent (alirocumab) Product Information, June 2023.



Amgen Australia Pty Ltd. ABN 31 051 057 428, Sydney NSW 2000. ©2024 Amgen Inc. All rights reserved. AMG4105. AUS-145-0424-80014. Date of preparation: April 2024.



## DR CHARANJIT (CHET) S. RIHAL, M.D.

INTERVENTIONAL CARDIOLOGIST, CHAIR, CARDIOVASCULAR MEDICINE,  
MAYO CLINIC, ROCHESTER, MINNESOTA

Dr. Rihal graduated from the University of Manitoba Medical School and completed his post graduate training at Mayo Clinic.

Following his first faculty position at McMaster University he returned to Mayo in 1995, where he has served in several leadership roles including directing the cardiac catheterization laboratory and chairing the Department of Cardiovascular Medicine.

Since 2016 Dr. Rihal has chaired the Personnel Committee in Rochester and has been on the forefront of developing and instituting institutional approaches to sexual and other harassment.

In 2021 he joined the Mayo Clinic Board of Governors and Trustees and now chairs the Institutional People and Culture Committee, which is charged with development and implementation of people, workforce, and cultural strategies in support of Mayo's strategic plan.



## DR ATTA BEHFAR, M.D. PH.D

CARDIOLOGIST, MAYO CLINIC, ROCHESTER, MINNESOTA

The laboratory of Atta Behfar, M.D., Ph.D., uses state-of-the-art technologies developed at Mayo Clinic to understand heart disease at its most elemental level. With this understanding, Dr. Behfar and his colleagues are doing cardiovascular regeneration research with the aim of developing novel therapies to prevent and cure chronic heart conditions.

Specifically, the group led by Dr. Behfar focuses on development and use of both stem cells and protein-based therapies to reverse injury caused by lack of blood flow to the heart.

Goals include:

- Development and application of a ready-to-use protein-based technology to protect the heart at the time of infarction
- Application of highly reparative cardiopoietic stem cell technology to a broad range of heart failure conditions

Focus areas

- Phase III clinical testing of cardiopoietic stem cells in patients with end-stage heart failure
- First-in-human, or Phase Ib, testing of cardiopoietic stem cells in the setting of heart surgery:
  - o Valvular heart disease with low ejection fraction
  - o Ischemic and nonischemic heart disease requiring left ventricular assist device (LVAD) implantation
  - o Ischemic heart disease requiring coronary artery bypass graft surgery (CABG)
- Development and validation of a rapid diagnostic panel to identify patients at highest risk of heart failure following a heart attack
- Optimization and preclinical testing of protein delivery to the heart following infarction



## **DR JOE ARAGON MD, FACC, SCAI**

STRUCTURAL INTERVENTIONAL CARDIOLOGIST, SANSUM CLINIC, UNIVERSITY OF SOUTHERN CALIFORNIA

Most Outstanding Cardiology Fellow (2003), Cedars-Sinai Medical Center

Assistant Clinical Professor (2007-present), Keck School of Medicine, University of Southern California

Chair (2007-2008), Institutional Review Board, Santa Barbara Cottage Hospital.

Staff Physician (2005-present), Interventional Cardiology & Cardiology, Santa Barbara Cottage Hospital.

Consultant (2004-2006), Conor MedSystems.

Guest Lecturer (2001-2005), David Geffen School of Medicine, University of California Los Angeles.

Cardiology Expert, LiveStrong.com

Recognized by Castle Connolly as among the nation's Top Doctors



## PROF ROHAN JAYASINGHE | CONFERENCE CHAIR

Medical Director - Cardiology Department - Gold Coast University Hospital - Queensland  
Professor of Cardiology - Griffith University - Queensland  
Clinical Professor of Medicine - Macquarie University - Sydney  
Adjunct Professor of Medicine - Bond University - Gold Coast



## DR SUKU THAMBAR

After completing his studies in medicine at the University of Sydney, Dr Suku Thambar undertook training in cardiology at St Vincent's Hospital, Sydney. He then completed a two-year interventional cardiology fellowship at Rhode Island Hospital in the United States.

In 2000 Dr Thambar was employed as the Senior Staff Specialist Cardiologist at Hunter New England Area Health, Newcastle, NSW. He holds a conjoint appointment of Senior Staff Interventional Cardiologist at the John Hunter Hospital, and Senior Lecturer of the Faculty of Medicine, University of Newcastle.



## DR BEN HUNT

Dr Ben Hunt is a Cardiologist and Cardiac Electrophysiologist. Ben completed a Bachelor of Science followed by a MBBS at the University of Queensland in Brisbane, from which he graduated in 2002. Ben registered as a Cardiologist in 2009, having completed advanced training at the Princess Alexandra and The Prince Charles Hospitals.

In 2011 Ben completed a two-year fellowship in Clinical Cardiac Electrophysiology at the Foothills Hospital in Calgary, Canada. Ben's special interests include atrial fibrillation, heart rhythm disorders, ablation of arrhythmias, left atrial appendage occlusion and implantation and management of pacemakers and defibrillators.



## DR PETER FAHMY

Dr Peter Fahmy is a Cardiologist with subspecialty training in Interventional and Structural Cardiology working at Norwest Private Hospital, Blacktown and Westmead Public Hospitals.

His medical career started at Otago University, New Zealand graduating in 2004. He moved to Australia to continue his medical career in cardiology, where he completed his internal medicine training at Westmead Hospital then speciality training at Monash Heart. He then undertook a PhD in gene therapy at the University of Sydney.

Dr Fahmy travelled to Vancouver Canada to undertake a Fellowship in Interventional and Structural Cardiology at Vancouver General and St Paul's Hospitals.

He is team lead for the Norwest Private Hospital Structural Heart Team involved in setting up the transcatheter valve program at Norwest Hospital.



## DR VIRAG KUSHWAHA

Dr Virag Kushwaha is an interventional cardiologist with special interest in the management of structural heart disease and complex coronary artery disease. He graduated in medicine and surgery at the University of Sydney in 2005. He completed his postgraduate training in internal medicine and cardiology at the Prince of Wales Hospital in Sydney and the Leeds General Infirmary in the UK.

Dr Kushwaha is a Senior Staff Specialist at the Prince of Wales Hospital and a visiting Medical Officer at the Prince of Wales Private Hospital, Eastern Heart Clinic, Sutherland Heart Clinic and Port Macquarie Base Hospital. Dr Kushwaha runs an Aboriginal Health Clinic in Sydney and is a volunteer for the East Timor Hearts Fund. Dr Kushwaha is actively involved in clinical research and is a Conjoint Lecturer with the University of New South Wales.



## ASSOCIATE PROF HAL RICE

Dr Hal Rice is Director of Interventional Neuroradiology at Gold Coast University Hospital in Queensland Australia. He studied Medicine at the University of Queensland and Specialist training in Radiology at the Royal Brisbane and Women's Hospital before fellowship training in Diagnostic and Interventional Neuroradiology at The Mount Sinai Medical Center in New York City.

Returning to the Gold Coast in 2002 he founded the Interventional Neuroradiology service at Gold Coast Hospital and subsequently founded Qscan Radiology Clinics which as the Qscan Group has grown to become one of Australia's largest Radiology group practices with over 85 practices and 1200 staff members. He along with his colleague Dr Laetitia de Villiers hosted the World Federation of Interventional and Therapeutic Neuroradiology 13th Congress in November 2015. He is dedicated to accelerating innovation in the endovascular treatment of brain vascular abnormalities, aneurysms and acute ischaemic stroke.

The service at Gold Coast University Hospital treats patients locally and from throughout Australia with acute stroke patients airlifted up to 2000km from remote locations. The service has been instrumental in developing innovative treatment techniques with flow diversion therapy, Corindus robotic neurovascular procedures and first in human device clinical trials.

He is co-founder of NeuTex Image Guided Therapy Surgical and Robotics Training center at the Gold Coast Health and Knowledge Precinct. A facility dedicated to education, training and innovation that utilises state of the art medical imaging equipment and 3D printed anatomic models to precisely replicate surgical treatments for medical specialist training and biomedical innovation.





### DR KATHERINE LAU

Dr. Lau completed medical training at the University of Queensland and completed advanced Cardiology training at the Royal Brisbane and Womens Hospital and the Prince Charles Hospitals in Brisbane. She has completed a two year Echocardiography and Structural Fellowship at the Prince Charles Hospital. She is currently a senior Staff specialist at the Prince Charles Hospital, visits St Vincent's Private Hospital Northside and St Andrews War Memorial Hospital in Brisbane. She is a Senior Lecturer in Medicine at The University of Queensland.



### DR PETER BAILEY

I completed my medical degree at the University of Saskatchewan in Canada graduating in 1981. My neurology fellowship was at the Montreal Neurological Institute at Mc Gill University in Montreal Quebec graduating in 1985. I worked as a general neurologist with an interest in stroke at Saint John New Brunswick from 1985 to 2008. I volunteered in Malawi Africa for 2 years and then moved to the Gold Coast in 2011 where I currently preside.



### PROF KULJIT SINGH

Prof Kuljit Singh is a senior staff specialist cardiologist at the Gold Coast University Hospital . He is a coronary and structural interventional cardiologist. Kuljit completed his PhD in Cardiology at university of Adelaide with a research medal and interventional cardiology fellowship at the Ottawa Heart Institute.



## DR JORGE MORAGUES



Dr Jorge Moragues is a Cardiologist specialised in Cardiac Imaging with a special interest in Interventional Echocardiography. Jorge is a Staff Specialist at Wollongong Hospital and a Senior Clinical Lecturer for the University of Wollongong. Jorge is the clinical director of the ISLHD Heart Failure Clinic, which specialises in complex heart failure and cardiomyopathies, cardiac amyloidosis and pulmonary hypertension. He is in charge of most of the imaging diagnosis, patient selection, peri-procedural imaging and follow up for the structural interventional program including ASD and PFO closure, left atrial appendage occlusion and transcatheter edge-to-edge mitral valve repair.

## DR DALE MURDOCH



Dr Dale Murdoch BSc MBBS FRACP FCSANZ is a general and interventional cardiologist in Brisbane, Australia, with special interests in structural heart disease intervention, transcatheter heart valves and transformative technology in healthcare. Dr Murdoch completed fellowships in interventional cardiology at The Prince Charles Hospital, Brisbane, Australia and St Paul's Hospital, Vancouver Canada. Currently, he is focussed on clinical practice, research and education and performs a full range of complex coronary and structural heart interventions. He has authored 3 book chapters and over 100 peer-reviewed papers and abstracts, and regularly presents at national and international scientific meetings. Dr Murdoch is a senior staff specialist at The Prince Charles Hospital in Brisbane, Australia, visits St Vincent's Private Hospital Northside and is a Senior Lecturer in Medicine at The University of Queensland.



## DR KAREN PHILLIPS



Dr Karen Phillips is a Cardiac Electrophysiologist in private practice in Brisbane. She is a Clinician and Researcher. She heads the Brisbane AF Clinic which is dedicated to the comprehensive management of atrial fibrillation. The clinic is based at Greenslopes Private Hospital, Brisbane – the largest private hospital in Australia. She underwent specialised training at the Cleveland Clinic, America’s Number One rated Cardiac Hospital in 2006–2007 under the mentorship of Dr Andrea Natale, a recognised world leader in Atrial Fibrillation Ablation.

Since 2008 she has established one of the largest single-operator Atrial Fibrillation ablation services in Australia at Greenslopes Private Hospital. She has emerged as an expert and one of the leaders of Atrial Fibrillation Interventional procedures in Australia, including performing Catheter Ablation for AF and implantation of Left Atrial Appendage Occlusion Devices for stroke prevention. She has a strong publication record, presents regularly at national and international conferences, is actively involved in clinical trials and has been a vocal patient advocate for new therapies for atrial fibrillation.

## DR SYLVIO PROVENZANO

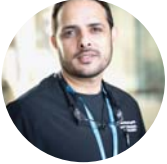


Dr Sylvio Provenzano (MD, MSc, FRACS) is a cardiothoracic surgeon and a TAVI implanter, with special interests in structural heart disease, complex cardiac operations and ECMO support.

Dr Provenzano extensively collaborates with cardiologists and intensivists at the GCUH, in research and clinical practice.

Dr Provenzano has a strong background in congenital and valvular disease, including endocarditis. He has studied and trained in Brazil, USA, Germany and Australia.

Dr Provenzano holds a position of senior specialist at the Gold Coast University and visits the GC Private Hospitals.



## DR MUDDASSIR RASHID

Dr Muddassir Rashid is a highly skilled interventional radiologist who serves as the Director of Interventional Radiology at Gold Coast University Hospital and is the lead paediatric interventional radiologist at Queensland Children's Hospital. He completed his fellowship training in abdominal imaging, paediatric radiology, and interventional radiology in Melbourne, Australia.

Dr Rashid's areas of expertise include interventional oncology, liquid embolics, thoracic and abdominal aortic interventions, and paediatric interventions. He is also an accomplished educator and researcher, currently holding an adjunct associate professor position at Bond University and Griffith University's Schools of Medicine.

Dr Rashid is a frequent speaker at national conferences, sharing his knowledge and experience with fellow medical professionals. He is also actively involved in various clinical trials at Gold Coast University Hospital, contributing to the advancement of medical science and patient care.



## MARK WEAVER

Mark Weaver is currently the Cardiac Nurse Educator for the Gold Coast University Hospital. I have been nursing for almost 15 years, with a background in cardiology, cardiac surgery, intensive care, and the cardiac catheter lab. I have held a variety of roles including clinical nurse, clinical facilitator, student assessor/facilitator, clinical nurse consultant & nurse educator. I hold a Graduate Certificate in Critical Care Nursing and am currently studying my Masters in Nursing.



## AGNES VAN MANEN

Global Senior Product Manager  
Structural Heart Disease and Congenital Heart Disease  
IGT-S Business Philips

Agnes has an MSc in Industrial Design Engineering from the Technical University in Delft (TUDelft) with a focus on medical product development and has more than 15 years experience in medical industry.

Agnes joined Philips in 2012. In the years after she had different senior roles within the cardiology segment, she played an instrumental role in the Azurion Launch and in the integration of EPD Solutions.

Since 2021 she is the segment lead in IGT Systems responsible for the SHD and CHD product portfolio and leading the up- and downstream marketing to achieve our procedural innovation ambition in this clinical area.



## DR JAMES XU

Dr James Xu is a Staff Specialist Interventional Cardiologist and Director of Cardiac Catheterisation Laboratories at Liverpool Hospital, Sydney. He graduated from the University of Sydney Medical School in 2009. He completed his Cardiology and Interventional training at Liverpool Hospital, Sydney, and was awarded a PhD degree in 2021 before undergoing another year of CHIP/CTO Fellowship at the Sandra Atlas Bass Heart Hospital at Northwell Health, New York, USA. He has a keen interest in CHIP/CTO intervention.



## DR TONY VO

Dr Tony Vo is a staff specialist cardiologist at Gold Coast University Hospital. He performs both coronary and structural interventional with a special interest in PFO and ASD procedures.

Dr Vo earned his medical degree from the University of Melbourne and completed his cardiology training at various Australian teaching hospitals including Royal North Shore Hospital, Ryde Hospital, Launceston General Hospital and Royal Darwin Hospital before settling into sunny Queensland and undertaking his Interventional Cardiology Fellowship at the Gold Coast University Hospital. He will be going to the United States later this year for further education and training in PFO/ASD closures.

He is actively involved in teaching has been recognised and been invited on numerous occasions by the Cardiovascular Research Foundation (CVRF) to be the Australian ambassador for major internationally recognised interventional cardiology meetings (TCTAP, AP Valves and Structural Heart and Complex PCI).



## PROF STEPHEN WORTHLEY

Professor Stephen Worthley is a globally renowned interventional cardiologist with a particular focus on valve replacements.

He regularly teaches and trains cardiology fellow students in a variety of interventional procedures as well as being active in research with over 230 published papers.

Stephen graduated from Medicine at the Adelaide University. His training included his Cardiology fellowship at the Royal Adelaide Hospital, his PhD at the Mount Sinai Medical Centre in New York, and post-doctoral fellowship at Monash Medical Centre, Melbourne.



## ASSOCIATE PROFESSOR ASTIN LEE

Associate Professor Dr Astin Lee is a consultant and interventional cardiologist with a clinic in Wollongong.

Associate Professor Lee graduated from the University of Sydney with First Class Honours in Bachelor of Medicine and Bachelor of Surgery in 1997.

He completed his cardiology training in 2004 and an interventional fellowship at Westmead Hospital in 2005.

Associate Professor Lee holds Fellowships from:

The Royal Australasian College of Physicians  
The Cardiac Society of Australia and New Zealand  
The American College of Cardiology  
The European Society of Cardiology  
The Royal College of Physicians (London)  
The Society for Cardiovascular Angiography and Intervention.  
He is currently the Director of Cardiology at Wollongong and Shellharbour Hospitals. He is also the Head of Cardiac Services in the Illawarra Shoalhaven Local Health District overseeing the delivery of cardiac services from Bulli to Milton-Ulladulla.

He is a Clinical Associate Professor of the School of Medicine at the University of Wollongong.



## MAGGIE HE

Maggie is a current Interventional Cardiology Fellow at Gold Coast University Hospital. She completed Advanced Training in Cardiology in Gold Coast and Brisbane. Maggie is excited to continue pursuing a career in cardiology and plans to support future junior doctors interested in Intervention.



### PROF CHRIS HAYWARD

Professor Stephen Worthley is a globally renown interventional cardiologist with a particular focus on valve replacements. He regularly teaches and trains cardiology fellow students in a variety of interventional procedures as well as being active in research with over 230 published papers.

Stephen graduated from Medicine at the Adelaide University. His training included his Cardiology fellowship at the Royal Adelaide Hospital, his PhD at the Mount Sinai Medical Centre in New York, and post-doctoral fellowship at Monash Medical Centre, Melbourne.



### DR PANKAJ JAIN

Dr Jain is an academic interventional cardiologist with appointments at RPA and MQ Health. His interests include complex coronary and structural heart interventions and interventions for heart failure.

After completing his Cardiology training at St Vincents Hospital, he undertook a PhD for which he won the UNSW Dean's Award and St Vincent's Clinical School Prizes for Outstanding Thesis. He then undertook interventional cardiology fellowships at St Vincent's followed by Tufts Medical Centre, Boston, where he gained experience with a range of cutting-edge technologies.

His career vision is to introduce these devices to Australia to enable treatment for the most critically unwell heart patients.





### DR LAILA KHAN

Dr Laila Khan is a Staff Specialist Imaging Cardiologist currently based in the Nation's Capital at The Canberra Hospital.

Dr Khan undertook Cardiology Advanced Training at The Prince Charles Hospital in Brisbane and subsequently completed an Advanced Echocardiography Fellowship at Gold Coast Health Service. Dr Khan was the inaugural Advanced Echo Fellow at Gold Coast Health Service and won the 14th Echo Hong Kong Young Cardiologists/Fellow Echo Case Competition in 2023.

Dr Khan has a great interest in both valvular and non-valvular structural interventions, infective endocarditis, pulmonary hypertension and perioperative medicine.



### DR KIRAN SHEKAR

Kiran Shekar is a Senior Intensive Care Specialist and Director of Research at the Prince Charles Hospital, Brisbane, Queensland, Australia. He holds academic appointments as Adjunct Professor at Queensland University of Technology and Associate Professor at University of Queensland.

Shekar is passionate about addressing the global variability in intensive care and extracorporeal life support (ECLS) outcomes through innovation, research, and education. His research interests include pathophysiology of cardiorespiratory failure, ECLS and mechanical circulatory support.

His ongoing research program "The No Tube Project" aims to integrate less invasive respiratory supports with ECLS to provide more personalized respiratory support and to minimise the burden of invasive mechanical ventilation.



## DR NICK COLLINS

Nick completed his undergraduate education at the University of Newcastle in 1998 and completed cardiology training at the John Hunter Hospital in 2005.

Dr Collins then completed Fellowships in Adult Congenital Heart Disease and Interventional Cardiology at the Toronto General Hospital/University Health Network, Toronto, Canada. Particular interests include congenital heart disease, pulmonary hypertension, peri-operative cardiology assessment and interventional cardiology, focusing on complex coronary and interatrial interventions, including atrial septal defect and patent foramen ovale closure.



## JEANINE STEWART

Jeanine is an experienced Nurse Practitioner who works at the Prince Charles Hospital in Brisbane, Queensland. She has over 25 years clinical cardiac nursing experience, completing her Graduate Diploma of Cardiac Nursing and holds Nurse Practitioner Masters degree from Queensland University of Technology in 2014.

Jeanine has held various clinical positions within interventional cardiovascular nursing and prehospital retrieval settings within public and private in Australia and internationally. Jeanine holds a sessional position with Griffith University within their nursing facility. Jeanine holds many clinical leadership roles both with in cardiology at TPCB and more broadly Statewide and Nationally. These include clinical leadership in the Cath Lab, Mentorship for nursing including Np students. She holds a position on the Queensland Cardiac Clinical Network committee, and Metro North Nurse Practitioner Advisory committee. Jeanine is an invited member of CSANZ writing committee for the 2024 ACS guidelines for the management of acute coronary syndrome



**1,000+ RESEARCHERS**



**15,000+ JOBS**



**H+K**



**20,000+ STUDENTS**



**50+ STARTUPS AND SMEs**

**THE GOLD COAST  
HEALTH AND KNOWLEDGE PRECINCT  
PEOPLE TRANSFORMING LIVES**  
[gchkp.com.au](http://gchkp.com.au)







Pictured: Ivy fighting for life in Children's Critical Care at the Gold Coast University Hospital.

## HELP SAVE LIVES AND ENHANCE PATIENT CARE

The Gold Coast Hospital Foundation is committed to helping our Gold Coast community receive the best possible care when it's needed most.

With generous donations, the foundation provides funding for life-saving medical equipment, world-class research programs and vital support services, including cancer patient transport and emergency accommodation for patients and their families suffering the uncertainty and stress of ill health.

Your support today could be the difference for the life of a local child or adult.

Donate  
Now



GOLD COAST  
HOSPITAL  
FOUNDATION



[gchfoundation.org.au](http://gchfoundation.org.au)  
(07) 5594 6986

thank  
you

Diamond Sponsor



Gold Sponsors



Silver Sponsors



**PHILIPS**



Bronze Sponsors



Conference Partners



# DESIGNED TO CONFORM. SO THE HEART DOESN'T HAVE TO.

The GORE® CARDIOFORM Septal Occluder advances patent foramen ovale (PFO) closure with a solution designed to naturally conform to a patient's unique PFO anatomy — delivering on long-term safety and performance.\*,1

0

reported cardiac  
erosions†

99%

effective closure across  
anatomies at 24 months‡,§

69%

relative reduction in  
recurrent stroke versus  
medical management alone  
at 5-year median follow-up¶,1

The advanced conformable solution for PFO and ostium secundum atrial septal defect (ASD) closure.

\* All PFO anatomies within indicated sizing parameters of the *Instructions for Use*.

† Reported incidence of device-related cardiac erosion for GORE® CARDIOFORM Septal Occluder, GORE® CARDIOFORM ASD Occluder and GORE® HELEX® Septal Occluder. Calculated using data from CATSWeb Product Surveillance Tracking System (PSTS). Data on file. June, 2011–August, 2022; W. L. Gore & Associates, Inc.; Flagstaff, AZ.

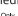
‡ Effective closure defined as freedom from large shunt > 25 bubbles as detected by transthoracic echocardiography adjudicated by Echo Core Lab.

§ Data on file 2020; W. L. Gore & Associates, Inc.; Flagstaff, AZ.

¶ The Gore REDUCE Study determined safety and efficacy of PFO closure with the GORE® CARDIOFORM Septal Occluder or GORE® HELEX® Septal Occluder plus antiplatelet medical management compared to antiplatelet medical management alone in patients with a PFO and history of cryptogenic stroke. All PFO anatomies were eligible for inclusion in this study within indicated sizing parameters of the *Instructions for Use*.

1. Kasner SE, Rhodes JF, Andersen G; Gore REDUCE Clinical Study Investigators. Five-year outcomes of PFO closure or antiplatelet therapy for cryptogenic stroke. *New England Journal of Medicine* 2021;384(10):970-971.

Consult Instructions  
for Use  
[eifu.goremedical.com](http://eifu.goremedical.com)

Refer to *Instructions for Use* at [eifu.goremedical.com](http://eifu.goremedical.com) for a complete description of all applicable indications, warnings, precautions and contraindications for the markets where this product is available. 

Products listed may not be available in all markets.

GORE, *Together, improving life*, CARDIOFORM, HELEX and designs are trademarks of W. L. Gore & Associates.

© 2024 W. L. Gore & Associates (Australia) Pty. Ltd. 24CR4005-EN01 APRIL 2024